



Developed by.

Aradhya

A BETTER WAY OF LIVING



SK
Developed by. **INFRASTRUCTURES**

Aradhya



EVERY PLACE WITH ITS THINGS & EVERYTHING IN ITS PLACE

A Bold new mixed Commercial and residential development invites you into the flourishing Aradhya. the hip essence and groovy entice and spur you on with unique Design and Planning of this Apartment.

APARTMENT FEATURES

■ Bedroom ■ Living & Dinning ■ Puja Room Kithen ■ Commercial Area ■ Basement Parking



Aaradhya

Where Dreams Come Home

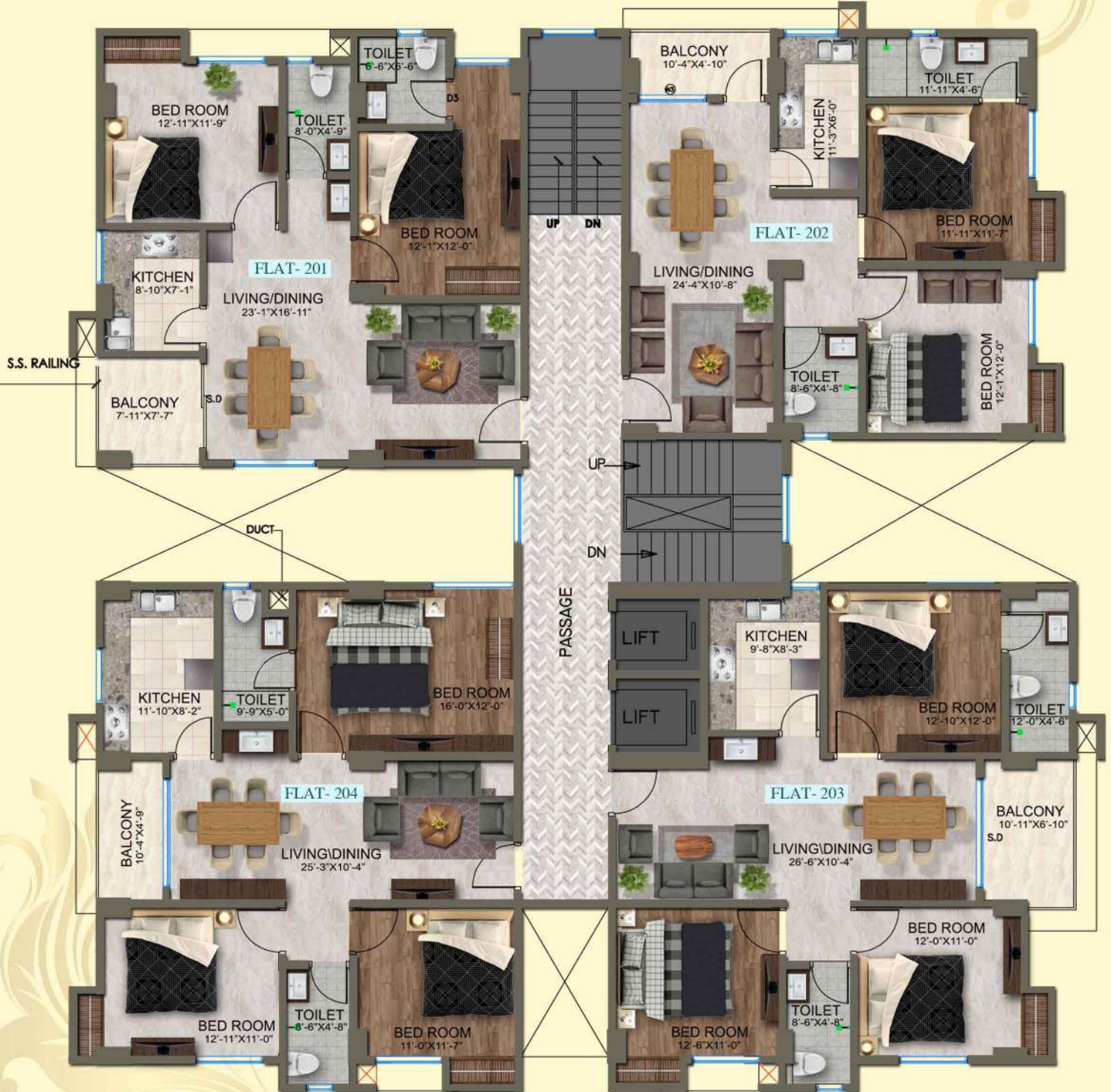
Aaradhya is a prestigious project located in heart of Dibrugarh. The project is meant for you to live a Comfortable life with your Families. Being an Upcoming locale, it has everything you need at an arm's Distance the abode boasts of all the amenities which you need in today's Modern days Every minute details of the dressing are taken care of by the Architects.

Aaradhya is the perfect place for you to live a blissful life.

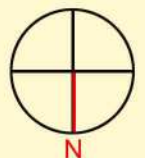


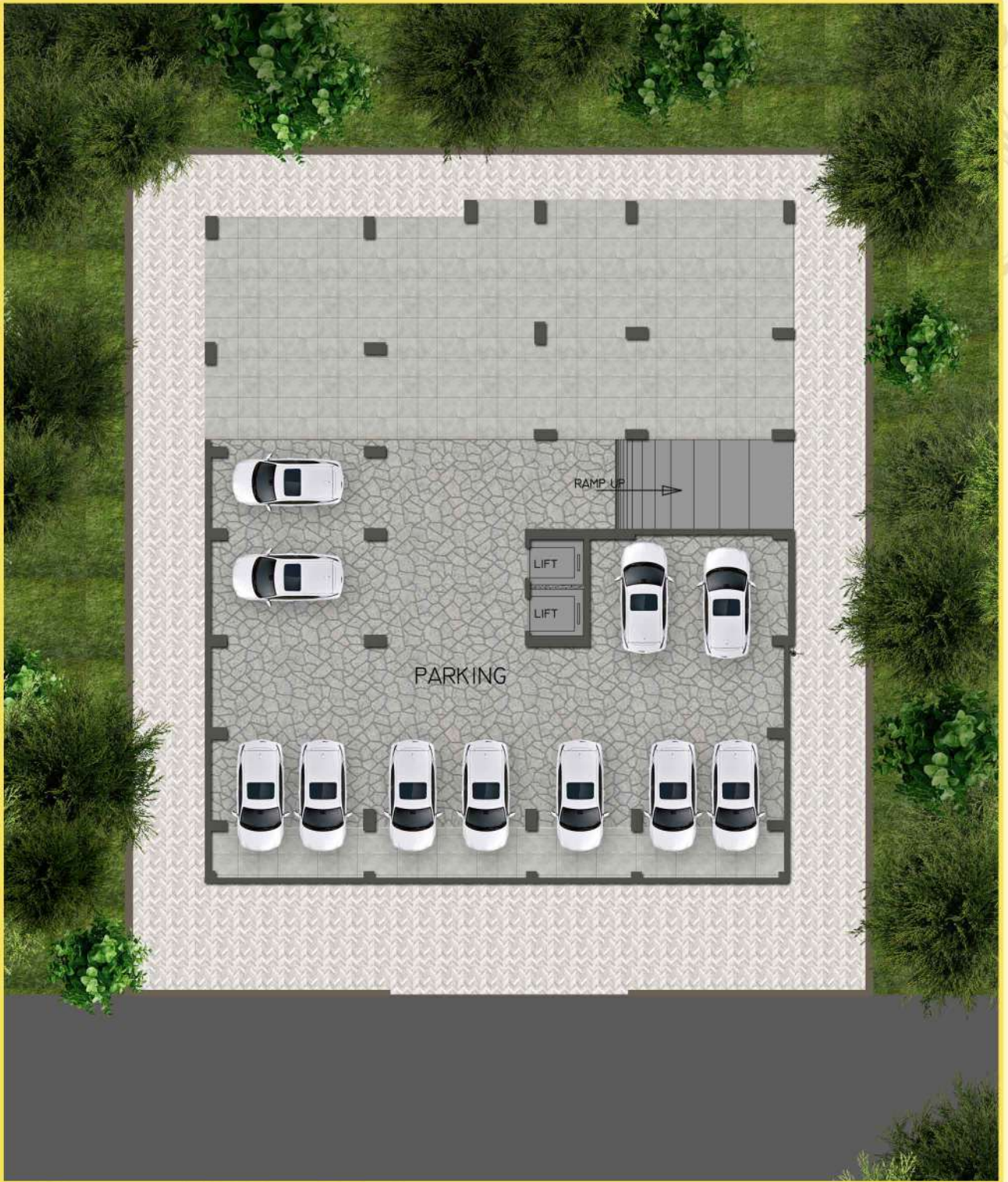
Typical Floor Plan- 2nd, 3rd, 4th, 5th, 6th, Floors

Flat no.	Built up area	SUBA	Carpet area	Balcony
201- 2 BHK	945.50 Sq.ft	1181.90 Sq.ft	811.50 Sq.ft	56.60 Sq.ft
202- 2 BHK	895.70 Sq.ft	1119.70 Sq.ft	764.60 Sq.ft	46.20 Sq.ft
203- 3 BHK	1064.40 Sq.ft	1330.50 Sq.ft	905.70 Sq.ft	66.70 Sq.ft
204- 3 BHK	1090.50 Sq.ft	1364.00 Sq.ft	949.70 Sq.ft	48.60 Sq.ft

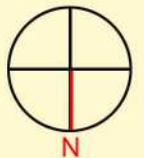


MASTER PLAN





BASEMENT PLAN

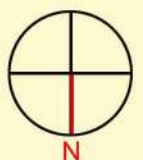


GROUND FLOOR

Shop no.	Built up area	SUBA	Carpet area
SHOP -1	1457.08 Sq.ft	1821.40 Sq.ft	1379.30 Sq.ft
SHOP -2	382.40 Sq.ft	478.00 Sq.ft	343.50 Sq.ft
SHOP -2	633.40 Sq.ft	791.30 Sq.ft	574.80 Sq.ft



GROUND FLOOR PLAN

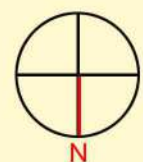


MEZ. Floor plan

Shop no.	Built up	SUBA	Carpet area
01	474.87 Sq.ft	593.58 sq.ft	426.84 sq.ft
02	258.00 Sq.ft	322.50 sq.ft	222.10 sq.ft
Office.	Built up	SUBA	Carpet area
A	867.00 Sq.ft	1083.75sq.ft	803.00 sq.ft

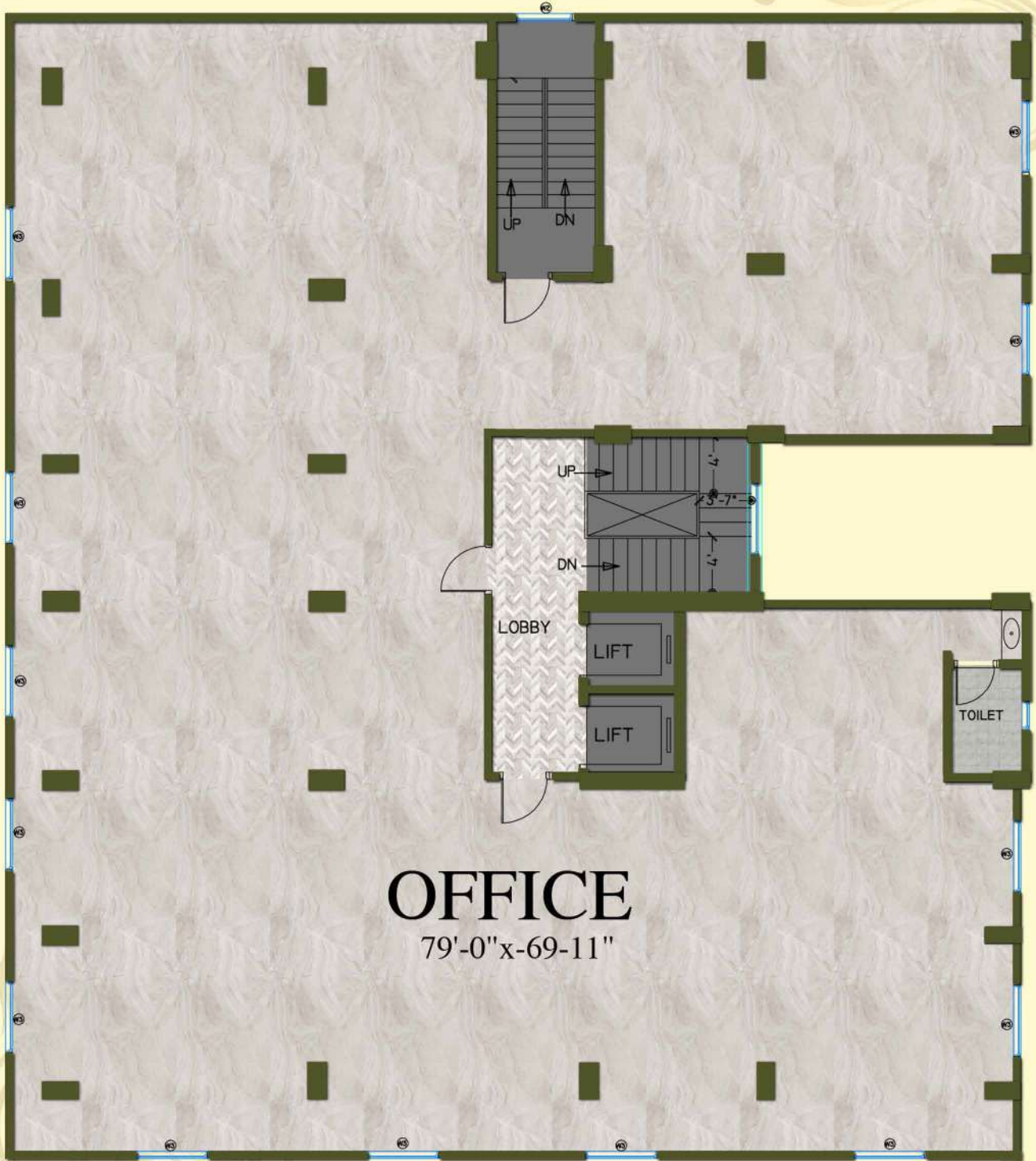


MEZ.FLOOR PLAN

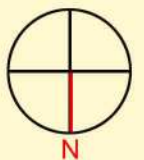


FIRST FLOOR

Office.	Built up area	SUBA	Carpet area
OFFICE	4758.58 Sq.ft	5948.30 Sq.ft	4758.58Sq.ft



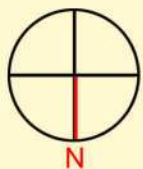
FIRST FLOOR PLAN



UNIT PLAN

FLAT NO. 201 - 2 BHK

Flat no.	Built up area	SUBA	Carpet area	Balcony
201- 2 BHK	945.50 Sq.ft	1181. 90 Sq.ft	811.50 Sq.ft	56.60 Sq.ft



UNIT PLAN

FLAT NO. 202 - 2 BHK

Flat no.	Built up area	SUBA	Carpet area	Balcony
202- 2 BHK	895.70 Sq.ft	1119.70 Sq.ft	764.60 Sq.ft	46.20 Sq.ft



UNIT PLAN

FLAT NO. 203 - 3 BHK

Flat no.	Built up area	SUBA	Carpet area	Balcony
203- 3 BHK	1064.40 Sq.ft	1330.50 Sq.ft	905.70 Sq.ft	66.70 Sq.ft



UNIT PLAN

FLAT NO. 204 - 3 BHK

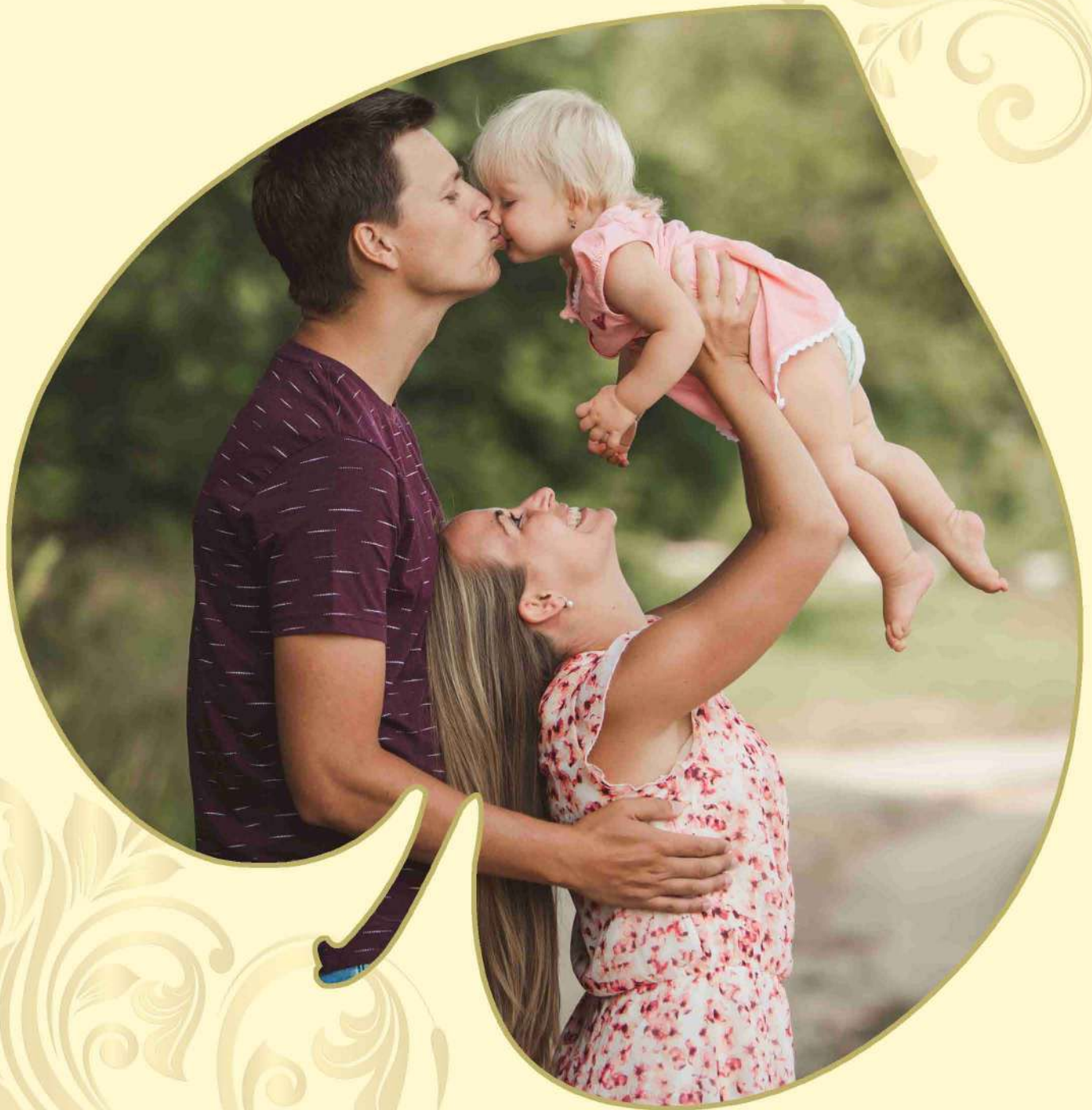
Flat no.	Built up area	SUBA	Carpet area	Balcony
204- 3 BHK	1090.50 Sq.ft	1364.00 Sq.ft	949.70 Sq.ft	48.60 Sq.ft



PAYMENT SCHEDULE

On Booking	10%
On Completion of Foundation	10%
On Casting of 1 st Slab	8%
On Casting of 2 nd Slab	8%
On Casting of 3 rd Slab	8%
On Casting of 4 th Slab	8%
On Casting of 5 th Slab	8%
On Casting of 6 th Slab	8%
On Casting of 7 th Slab	8%
On Casting of 8 th Slab	8%
On brick walling Completion	8%
Position	8%

Aaradhya



EXPERIENCE THE
LUXURY AROUND

Project at a glance

PROJECT HIGHLIGHTS

A Stylish Welcome with Designer Entrance
Ample Car parks in Basement & ground Levels
Conveniently nestled in the heart of Dibrugarh
Over 60% Open Spaces

APARTMENT FEATURES

3 Sides open flats for Ample Ventilation and Lighting
Well-planned, Modular Kitchen Layout
Designer bathrooms with branded Sanitary ware
Video Door Phone
Vitrified Flooring

ROOF TOP FEATURES

Well- equipped Gymnasium
Grand Celebration Hall

BLOCK FEATURES

Fully Vastu Compliant
2 High Tech Elevators in Building
Four Tier Security System
(Security Personnel, Intercom, Video Door Phone & CCTV)

OTHER FEATURES

Water Filtration plant
Deep Tube well Boring
Efficient Disaster Management System
Efficient Disaster Management System
24x7 Power Backup
Earthquake Resistance Construction

INTERNAL FEATURES

Foundation:
R C C Frame Structure
Conventional Brickwork Walls

Wall Finish :

Interior : Plaster of Paris
Exterior : Good quality of water proof paint as
Weather Shield or equivalent Colour wash paint

Kitchen :

Anti-skid Ceramic Tiles on Floor
Granite Kitchen platform with SS sink
Provision for Exhaust Fan
Hot/Cold Points

Toilets :

Anti-skid Ceramic Tiles for Floors & Standard
Ceramic Tiles on the wall, up to door height.
Reputed brands of high quality Sanitary ware &
C P fittings
Concealed plumbing & pipe Wok
Provision for Geyser

Doors:

Main Door Frames made of
seasoned wood & Designer Door with Locks
Door frames made of seasoned wood and flush
Door only

Windows :

Aluminum Sliding Windows

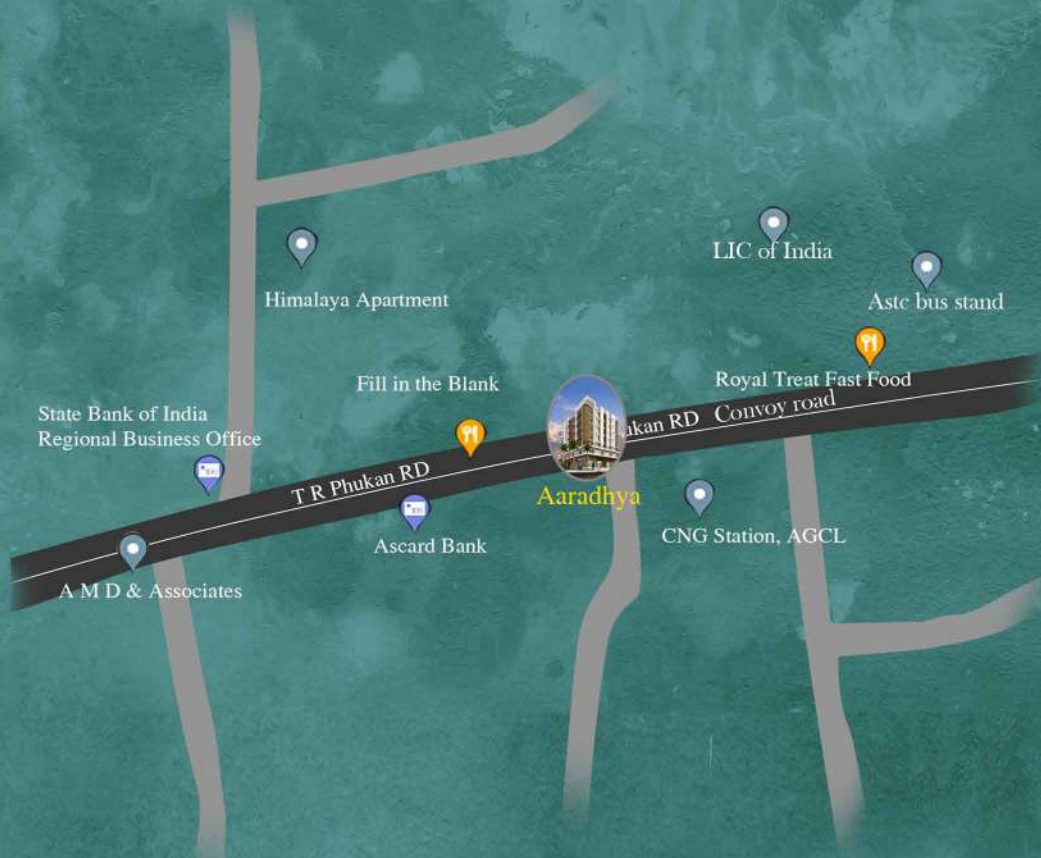
Common Lighting :

Illumination for compound and street lighting
inside the complex

You are on Right Place

CONTACT US.

9954481860 7099662474



SITE MAP

Designed By
Mukesh
8473080307

OFFICE ADDRESS

Dibrujan Rail line
North Jalan nagar.
Dibrugarh.
786002

ACHITECT

archineer & associates
Architect's Engineer's, Planner's & Valuer's
St.Stephens School Road Bordoloi Nagar, Sector -1
Bylane -8 Tinsukia - 786125, Assam
Tel : 0374 2340621 (0),2307933 (R) 23309910

SITE ADDRESS

T.R Phukan Road
Near ASTC.
Chowkidingee Dibrugarh.
786001

All Details in this booklet are for easy information and concept purpose only. do not form part of the agreement. this document is tentative and developers reserve the right to make variations